

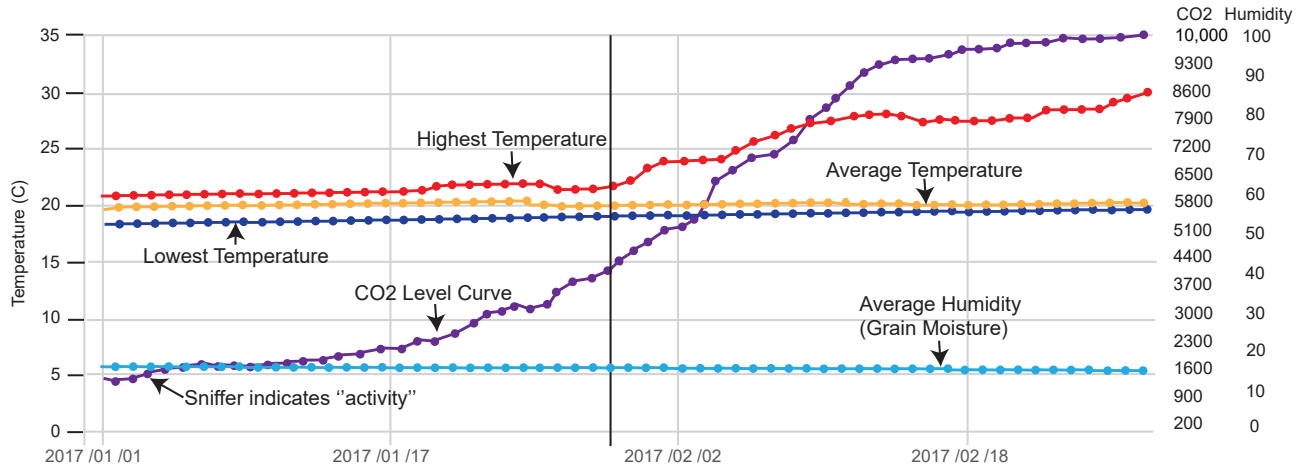
Trend Curves

Displays the highest and the lowest temperature readings in each bin and the average reading of all temperature sensors. If Moisture Sensor Cables are installed in the bins, it will be possible to display the trend curve for the average grain moisture and if CO2 sensors are installed it will be possible to display the curve for the CO2 level in the bins i.e. the "spoilage indication" curve.

The time span (from and to) can be freely selected and the data resolution can be selected as daily average, hourly average or 5 min average. This allows close scrutiny of any data recorded

Graph Option: Show Legend Show Min Show Avg Show Max Show CO2 Show Humidity

Detail Historical Information



Matrix view

Displays all temperatures in each Sensor Cable, including display of H: High and L: Low. All Sensor Cables are grouped together for each bin. The color of the top bar indicates if all sensors are working correctly in the bin (Green, Light Grey or Red).

Home Plant Management Aeration Control Administration

⚠ Alarm Status
 ✅ Service Status
 ⚠ System Status

zGRAIN DASH BOARD Matrix Trend Inventory Management Reports Alarms

S03 - Type: Rice

020303

8 :	23.20
7 :	23.00
6 :	23.00
5 :	22.70
4 :	22.50
3 :	22.20
2 :	22.20
1 :	18.00

020301

8 :	23.50
7 :	23.00
6 :	23.00
5 :	22.70
4 :	22.70
3 :	22.50
2 :	22.50
1 :	21.50

020302

2 :	43.20 %
	22.70
1 :	10.20 %
	22.20